



ASPEN™

EVERCLEAR DRINKWARE



steelite
INTERNATIONAL



ASPEN™

EVERCLEAR DRINKWARE





a clear choice in beverageware

Enhance your beverage service with the virtually unbreakable Aspen Everclear Drinkware. Designed to withstand the rigours of foodservice, Aspen is a collection of drinkware made of a superior Polycrystal material that is food grade & ideal for any dining occasion. Consisting of stemware, tumblers and carafes, this range provides excellent translucency and undeniable quality.

Summit

4-5

Diamond

6-7

Nordic

8-9

Care & Use

10-11



top-shelf quality stemware

Summit by Aspen is a beautiful collection of stemware that offers excellent clarity with the look and feel of real glass. Made of durable Polycrystal, these stems provide an elegant design and top-shelf quality while being dishwasher safe. Whether dining outdoors or enjoying a cocktail at a nightclub, Summit is the perfect choice to elevate any libation.

*LIFETIME BREAKAGE GUARANTEE If any piece of Aspen Everclear Drinkware breaks, cracks or shatters under normal use, we will replace that product free of charge, upon the customer returning the product at their expense. This warranty is available only to the original party who would have purchased from an authorised Steelite dealer.

new

ASPEN EVERCLEAR DRINKWARE *summit*

ASPEN™

POLYCRYSTAL DRINKWARE



Champagne Flute
7030DR008
17.0cl (6oz)
H 23.2cm (9¹/₈") M 7.0cm (2³/₄")
TØ 5.1cm (2") BØ 7.0cm (2³/₄")



Champagne Flute White
7033DR008
17.0cl (6oz)
H 23.2cm (9¹/₈") M 7.0cm (2³/₄")
TØ 5.1cm (2") BØ 7.0cm (2³/₄")



Stemmed Wine
7030DR009
34.0cl (12oz)
H 20.0cm (7⁷/₈") M 7.6cm (3")
TØ 7.3cm (2⁷/₈") BØ 7.3cm (2⁷/₈")



Stemmed Wine White
7033DR009
34.0cl (12oz)
H 20.0cm (7⁷/₈") M 7.6cm (3")
TØ 7.3cm (2⁷/₈") BØ 7.3cm (2⁷/₈")



Champagne/Martini Coupe
7030DR016
23.65cl (8oz)
H 14.0cm (5¹/₂") M 10.2cm (4")
TØ 10.2cm (4") BØ 7.6cm (3")



Champagne/Martini Coupe White
7033DR016
23.65cl (8oz)
H 14.0cm (5¹/₂") M 10.2cm (4")
TØ 10.2cm (4") BØ 7.6cm (3")



Summit Stemless Wine
7030DR011
34.0cl (12oz)
H 10.2cm (4") M 8.6cm (3³/₈")
TØ 7.6cm (3") BØ 4.4cm (1³/₄")



Stemless Wine Blue
7032DR011
34.0cl (12oz)
H 10.2cm (4") M 8.6cm (3³/₈")
TØ 7.6cm (3") BØ 4.4cm (1³/₄")



Stemless Wine White
7033DR011
34.0cl (12oz)
H 10.2cm (4") M 8.6cm (3³/₈")
TØ 7.6cm (3") BØ 4.4cm (1³/₄")



Summit Carafe
7030DR007
85.25cl (30oz)
H 29.5cm (11⁵/₈") M 9.8cm (3⁷/₈")
TØ 4.1cm (1⁵/₈") BØ 9.8cm (3⁷/₈")



Carafe Cap Black
7035DR026
Carafe Cap Blue
7034DR026



tumblers that are guaranteed for life

Optimise your serving space with Diamond, the stacking tumblers from Aspen. From Bloody Mary's and margaritas to beer and shots of tequila, these virtually unbreakable tumblers are made of Polycrystal, a superior food-grade drinkware that is sure to impress. We guarantee its quality by offering a lifetime guarantee against breaks, cracks and shatters under normal use. Looking to customise your beverage experience? Diamond is also available in a handful of great colours to add that extra flair to the tabletop.

*LIFETIME BREAKAGE GUARANTEE If any piece of Aspen Everclear Drinkware breaks, cracks or shatters under normal use, we will replace that product free of charge, upon the customer returning the product at their expense. This warranty is available only to the original party who would have purchased from an authorised Steelite dealer.

new

ASPEN EVERCLEAR DRINKWARE *diamond*

ASPEN™

POLYCRYSTAL DRINKWARE



Shot
7030DR001
 6.0cl (2oz), 1½oz pour line
 H 7.6cm (3") M 4.4cm (1¾")
 TØ 4.4cm (1¾") BØ 3.2cm (1¼")



Shooter
7030DR002
 20.0cl (7oz), 5 oz pour line
 H 7.9cm (3⅜") M 7.3cm (2⅞")
 TØ 7.3cm (2⅞") BØ 6.0cm (2⅜")



Rocks
7030DR003
 28.5cl (10oz)
 H 8.6cm (3⅜") M 8.6cm (3⅜")
 TØ 8.6cm (3⅜") BØ 6.7cm (2⅝")



Tall
7030DR005
 40.0cl (14oz)
 H 14.0cm (5½") M 7.6cm (3")
 TØ 7.6cm (3") BØ 5.7cm (2¼")



Rocks Blue
7030DR003
 28.5cl (10oz)
 H 8.6cm (3⅜") M 8.6cm (3⅜")
 TØ 8.6cm (3⅜") BØ 6.7cm (2⅝")



Tall Blue
7030DR005
 40.0cl (14oz)
 H 14.0cm (5½") M 7.6cm (3")
 TØ 7.6cm (3") BØ 5.7cm (2¼")



durability beyond compare

Featuring excellent clarity and stain resistance, Nordic is a sleek & contemporary collection of drinkware by Aspen. Made to withstand the rigours of foodservice, Nordic is made of premium quality Polycrystal with a lifetime breakage guarantee. Not only will your beverages look great in these vessels, but its design accommodates stacking so storage is easier and more efficient.

*LIFETIME BREAKAGE GUARANTEE If any piece of Aspen Everclear Drinkware breaks, cracks or shatters under normal use, we will replace that product free of charge, upon the customer returning the product at their expense. This warranty is available only to the original party who would have purchased from an authorised Steelite dealer.

new

ASPEN EVERCLEAR DRINKWARE *nordic*

ASPEN™

POLYCRYSTAL DRINKWARE



Cooler
7029DR023
65.06cl (22oz)
H 15.9cm (6¼") M 9.8cm (3⅞")
TØ 9.8cm (3⅞") BØ 6.7cm (2⅞")



Pint
7029DR022
47.31cl (16oz)
H 14.9cm (5⅞") M 8.9cm (3½")
TØ 8.9cm (3½") BØ 6.0cm (2⅞")



Double Rocks
7029DR021
35.48cl (12oz)
H 9.5cm (3¾") M 9.8cm (3⅞")
TØ 9.8cm (3⅞") BØ 6.0cm (2⅞")



Rocks
7029DR020
28.09cl (9½oz)
H 8.9cm (3½") M 8.9cm (3½")
TØ 8.9cm (3½") BØ 5.7cm (2¼")



Care & Use Instructions

- Dishwasher & freezer safe
- Items must be carefully placed in the dishwasher while avoiding direct contact with other dishes and drinkware
- Do not wash with harsh abrasives such as brushes or scrubber pads as this may cause scratches; harsh chemicals including strong acid or alkali cleaning agents should also be avoided
- Use warm, soapy water or a neutral dishwashing liquid for cleaning
- Dry naturally or with a soft cloth after hand washing; we recommended using a microfiber cloth which will preserve product clarity
- Product can be used normally between temperatures of -30°C and 110°C (-22°F and 230°F)
- Avoid prolonged exposure to UV light, sunscreen or chlorine
- Not recommended for use in microwaves or high temperature sterilizers

Custom Colours Available



7032 Blue



7045* Teal



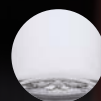
7044* Red



7043* Purple



7042* Amber



7033* White



7030 Clear

*non-stock colours available**
Further information available upon request.





steelite

INTERNATIONAL

United Kingdom & Republic of Ireland

Steelite International Ltd
Orme Street
Stoke-on-Trent
ST6 3RB, England
Telephone +44 (0)1782 821 000
Fax +44 (0)1782 819 926
Email headoffice@steelite.com

London Showroom

Steelite International Ltd
75 Wells Street
2nd Floor South
London, W1T 3QH
Telephone +44 (0)1782 249 599
Email london@steelite.com

United States of America

Steelite International USA Inc
154 Keystone Drive
New Castle, PA 16105
Telephone +1724 856 4900
Fax +1724 856 7924
Email usa@steelite.com

Benelux

Steelite International Benelux BV
's Gravelandseweg 258
3125 BK Schiedam
Nederland
Telephone +31 (0)20 617 5915
Email info@steelite.nl

Germany

Steelite International
Deutschland GmbH
Philipp-Reis-Straße 16
64404 Bickenbach
Telephone +49 (0)6257 61950
Fax +49 (0)6257 7944
Email germany@steelite.com

France

Telephone +32 475 98 1081
Email france@steelite.com

Italy

Telephone +39 0522 902051
Fax +39 0522 902017
Email italy@steelite.com

Portugal

Telephone +351 918 550 429
Fax +351 211 541 022
Email portugal@steelite.com

Scandinavia

Telephone +46 730 322 818
Email scandinavia@steelite.com

Spain

Steelite International Spain
Médico Andrés Boldó, 2
03005 Alicante
Telephone +34 966 590 300
Fax +34 965 990 701
Email spain@steelite.com

Russia, Central & Eastern Europe

CECUK Ltd
Coleridge House, Suite 47
2-3 Coleridge Gardens
London
NW6 3QH
Telephone 0044 207 435 9033
Mobile 00777 613 5088
Email rcee@steelite.com

Australia

Steelite International
Unit 45, Slough Business Park
2 Slough Avenue
Silverwater
NSW 2128
Telephone +61 (0)2 9648 4522
Fax +61 (0)2 9648 4523
Email australia@steelite.com

Canada

Steelite International Canada Ltd
Unit 2, 26 Riviera Drive
Markham, Ontario
L3R5M1
Telephone +1 905 752 1074
Fax +1 905 752 1120
Email canada@steelite.com

Middle East

Steelite International Middle East
Renarte General Trading LLC
1109 Showroom, 1002 Office
Grosvenor Business Tower
Barsha Heights
P.O. Box 123568
Dubai
United Arab Emirates
Telephone +9714 435 6994
Fax +9714 435 6993
Email mea@steelite.com




Asia

Telephone +82 10 4997 7926
Fax +44 (0)1782 821 000
Email asia@steelite.com

Steelite Hong Kong Showroom

20/F. Chinachem Hollywood Center
1-13 Hollywood Road
Central, Hong Kong
Telephone +852 3906 8989
Fax +852 2147 9090
Email umesh@globalhotelware.com

www.steelite.com

 [steeliteinternationalEMEA](https://www.facebook.com/steeliteinternationalEMEA)
 [steeliteEMEA](https://twitter.com/steeliteEMEA)
 [steelite_emea](https://www.instagram.com/steelite_emea)

