

VOLUME 1

# 2024 UK NEW PRODUCTS

THE ART OF PRESENTATION



## THE ART OF PRESENTATION

You're not just setting a table. You're creating an experience, telling a story, sharing a culture - and food is at the heart of it. Food brings people together and connects them to tradition and inspiration.

At Steelite, we believe that tableware should do more than serve your food - it should serve your vision. We design, craft and curate the very best in tableware for chefs and concepts across the globe.

Partnering to create an unmatched range of inspired tabletop experiences where shape, colour, texture, light and weight combine to feed the senses. Helping our customers set the stage for their menus and their brands. Elevating presentation to an art. Steelite. The Art of Presentation.

### *who we are*

Steelite International is a world leading manufacturer and supplier of award winning tabletop, buffet and lighting solutions for the hospitality industry. Listening to our customers has allowed us to offer innovative solutions in china, metal, glass, wood and melamine. We are committed to offering the best in technology and design while minimising our effect on the environment. Our stability and reputation in the industry has provided us with both a diverse client list and a comprehensive channel of operations. Customer satisfaction is our top priority, which requires dedication, commitment, and a passion for achieving a level of excellence far exceeding expectations.

## CONTENTS

### *steelite distinction*

Alina .....6

### *steelite performance*

Amari .....8  
 Petra.....10  
 Messina .....12  
 Asteria.....14  
 Nyx .....16  
 Nordic.....18

### *ceramic tableware*

#### FOLIO

Concorde.....20  
 Terrace .....22  
 ROBERT GORDON Forager.....24

### *cutlery*

ADAM SIMHA Steak Knives.....26

### *accessories*

LAMPA Lighting Solutions.....27

### *buffet*

D.W. HABER Fusion .....28

#### CREATIONS

Cereal Dispenser .....29  
 Hydraulic Chafers .....29  
 MOGOGO Cantine.....30

### *melamine*

#### CREATIONS

Craft Arctic.....32  
 Blue Dapple.....33  
 Quarry .....34

### *luxury bone china*

#### WILLIAM EDWARDS

Quill .....36  
 Quanta.....38  
 Ranges now in stock .....40  
 Whiteware.....42



FOLIO CONCORDE 20

# New Products



STEELITE DISTINCTION ALINA 6



STEELITE PERFORMANCE AMARI 8



FOLIO CONCORDE 20



FOLIO TERRACE 22



ADAM SIMHA STEAK KNIVES 26



LAMPA LIGHTING SOLUTIONS 27



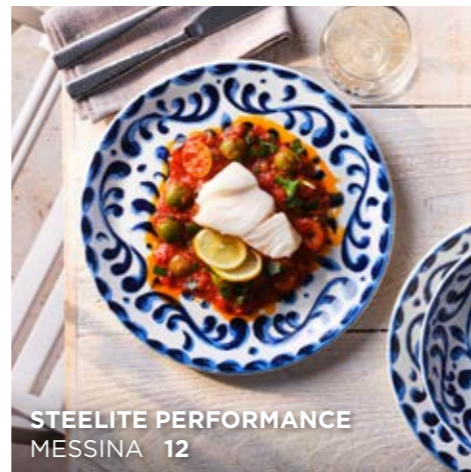
D.W. HABER FUSION 28



CREATIONS CEREAL DISPENSER 29



STEELITE PERFORMANCE PETRA 10



STEELITE PERFORMANCE MESSINA 12



MOGOGO CANTINE 30



CREATIONS MELAMINE CRAFT ARCTIC 32



CREATIONS MELAMINE BLUE DAPPLE 33



STEELITE PERFORMANCE NORDIC 14



WILLIAM EDWARDS QUILL 36



WILLIAM EDWARDS QUANTA 38



Alina combines two strong and complimentary aesthetics; The simplicity, linearity and restraint of Japanese design coupled with an easy-going, approachable, and casual style that embodies the Scandinavian way of life.

The Alina embossment draws the eye towards the centre of the piece, giving gravitas and focus to Chef's creativity. Alina delivers an interplay of light and line which provides a relaxed and contemporary platform for today's banqueting and upscale dining.



Gourmet Plate Large Well  
**C1220** 28.5cm (11¼") 19.0cm Well



Gourmet Plate Medium Well  
**C1221** 28.5cm (11¼") 15.0cm Well



Gourmet Plate Small Well  
**C1222** 28.5cm (11¼") 12.2cm Well



Gourmet Coupe Plate  
**C1223** 28.0cm (11")



Gourmet Plate Accent  
**C1227** 20.25cm (8")



Mid Rim Plate  
**C1230** 30.0cm (11¾")  
**C1231** 27.0cm (10½/8")  
**C1232** 25.5cm (10")



**C1233** 23.0cm (9")  
**C1234** 20.25cm (8")  
**C1235** 15.75cm (6¼")



Oval Plate  
**C1240** 33.0cm (13")



Gourmet Rimmed Coupe Bowl  
**C1224** 28.5cm (11¼")



Gourmet Deep Coupe Bowl  
**C1225** 28.0cm (11")



Gourmet Deep Rimmed Bowl  
**C1226** 28.5cm (11¼")



Mid Rim Bowl  
**C1260** 24.0cm (9½") 34.0cl (12oz)



Bowl  
**C1262** 15.25cm (6") 72.5cl (25½oz)  
**C1263** 13.0cm (5¼") 48.3cl (17oz)  
**C1264** 10.0cm (4") 20.0cl (7oz)  
Fits C1242



Oatmeal Bowl  
**C1261** 16.5cm (6½") 51.0cl (18oz)



Soup Cup Unhandled Stacking  
**C1252** 28.5cl (10oz) Fits C1242



Mug  
**C1253** 28.5cl (10oz) Fits C1242



Cup  
**C1251** Cup 22.75cl (8oz) Fits C1242  
**C1258** Cup 8.5cl (3oz) Fits C1243



Cup Stacking  
**C1250** 21.25cl (7.5oz) Fits C1242  
**C1255** 8.5cl (3oz) Fits C1243



Saucer  
**C1242** 15.25cm (6")  
**C1243** 11.75cm (5")



Beverage Pot  
**C1256** 60.0cl (21oz)  
**C1257** Beverage Pot Lid



Jug  
**C1254** 14.25cl (5oz) Fits C1242



Stripping back from heavy reactive glazes, Amari brings a light design to the table. Delicate flecks of glaze decorate gently curving profiles, providing a simple element to complement a variety of menus. This collection is designed to combine with Petra which brings an organic feel when mixed together.



Nordic Coupe Plate  
**0639** 28.0cm (11")



Nordic Coupe Plate  
**0634** 25.25cm (10")



Nordic Coupe Plate  
**0631** 20.25cm (8")



Nordic Coupe Plate  
**0630** 16.5cm (6½")



Nordic Tray  
**0640** 34.0cm (13½")



Nordic Tray  
**0641** 29.0cm (11½")



Nordic Tray  
**0642** 24.0cm (9½")



Bowl  
**0484**  
17.5cm (7") 98.0cl (34½oz)



Bowl  
**0482**  
15.5cm (6⅞") 65.5cl (23oz)



Bowl  
**0481**  
13.5cm (5¼") 45.5cl (16oz)



Bowl  
**0480**  
11.0cm (4½") 34.0cl (12oz)



Tulip Bowl  
**0538**  
7.0cm (2¾") 5.68cl (2oz)



City Mug  
**0623** 34.0cl (12oz) Fits  
Saucers X0042, 0158, 0218



City Mug  
**0624** 28.5cl (10oz) Fits  
Saucers X0042, 0158, 0218



City Mug  
**0626** 11.4cl (4oz) Fits  
Saucers X0043, 0165

Patterns Available





*dune*



Coupe Plate  
**0544** 28.0cm (11")



Coupe Plate  
**0566** 25.25cm (10")



Coupe Plate  
**0567** 20.25cm (8")



Coupe Plate  
**0568** 15.25cm (6")



Coupe Bowl  
**0569**  
25.25cm (10") 120.25cl (42.3oz)



Coupe Bowl  
**0570**  
21.6cm (8½") 83.5cl (29.4oz)

Inspired by nature's free forming lines, Petra introduces an organic aesthetic. The earthly design is lifted by the glaze applied, bringing a contemporary feel to the collection.



Evident from its namesake, a port in Sicily, Messina provides a bright, bold, and energetic surface perfect for outdoor dining or bringing the Mediterranean feel to the table. All pieces are freezer, dishwasher and microwave proof, making a practical yet stunning collection.



*blue*



Coupe Plate  
**0544** 28.0cm (11")



Coupe Plate  
**0566** 25.25cm (10")



Coupe Plate  
**0567** 20.25cm (8")



Coupe Plate  
**0568** 15.25cm (6")



Coupe Bowl  
**0569**  
25.25cm (10") 120.25cl (42.3oz)



Coupe Bowl  
**0570**  
21.6cm (8½") 83.5cl (29.4oz)



*elegant, sophisticated and bold*

Taking inspiration from early Greek mythology, Asteria is the goddess of stars, adding a sweeping bold, design to the tabletop. When paired with Nyx, the goddess of night, they form an interesting set of light and dark, that proves to be elegant, sophisticated, and bold.



Nordic Tray **NEW**  
**0640** 34.0cm (13½")



Nordic Tray **NEW**  
**0641** 29.0cm (11½")



Nordic Tray **NEW**  
**0642** 24.0cm (9½")



Nordic Coupe Plate  
**0639** 28.0cm (11") **NEW**  
**0634** 25.25cm (10")  
**0631** 20.25cm (8")  
**0630** 16.5cm (6½")



Stack Plate  
**0635** 28.5cm (11¼")  
**0636** 25.5cm (10")  
**0637** 20.25cm (8")  
Fits 0559 as a Lid  
**0638** 16.5cm (6½")  
Fits 0560 as a Lid



Round Stacking Tray  
**0559** 20.25cm (8") Fits 0637  
**0560** 16.5cm (6½") Fits 0638



Bowl  
**0484** 17.5cm (7") 98.0cl (34½oz)



Bowl  
**0482** 15.5cm (6¼") 65.5cl (23oz)



Bowl  
**0481** 13.5cm (5¼") 45.5cl (16oz)



Bowl  
**0480** 11.0cm (4½") 34.0cl (12oz)



City Mug  
**0623** 34.0cl (12oz)  
Fits X0042, 0158, 0218



City Mug  
**0624** 28.5cl (10oz)  
Fits X0042, 0158, 0218





*elegant, sophisticated and bold*

Taking inspiration from early Greek mythology, Nyx is the goddess of night, adding a sweeping bold, design to the tabletop. When paired with Asteria, the goddess of stars, they form an interesting set of dark and light, that proves to be elegant, sophisticated, and bold.



Nordic Tray **NEW**  
**0640** 34.0cm (13½")



Nordic Tray **NEW**  
**0641** 29.0cm (11½")



Nordic Tray **NEW**  
**0642** 24.0cm (9½")



Nordic Coupe Plate  
**0639** 28.0cm (11") **NEW**  
**0634** 25.25cm (10")  
**0631** 20.25cm (8")  
**0630** 16.5cm (6½")



Stack Plate  
**0635** 28.5cm (11¼")  
**0636** 25.5cm (10")  
**0637** 20.25cm (8")  
Fits 0559 as a Lid  
**0638** 16.5cm (6½")  
Fits 0560 as a Lid



Round Stacking Tray  
**0559** 20.25cm (8") Fits 0637  
**0560** 16.5cm (6½") Fits 0638



Bowl  
**0484** 17.5cm (7") 98.0cl (34½oz)



Bowl  
**0482** 15.5cm (6¼") 65.5cl (23oz)



Bowl  
**0481** 13.5cm (5¼") 45.5cl (16oz)



Bowl  
**0480** 11.0cm (4¼") 34.0cl (12oz)



City Mug  
**0623** 34.0cl (12oz)  
Fits X0042, 0158, 0218



City Mug  
**0624** 28.5cl (10oz)  
Fits X0042, 0158, 0218



The Nordic region has become synonymous with Chefs' skills in developing dishes that utilise the very best local ingredients and presenting them in a sympathetic and contemporary manner. Such an important culinary aesthetic deserves its own platform and the new Nordic range encompasses these shared design values. The simple but sophisticated plate profile's allow Chef's space to present dishes that can 'breathe', whilst simultaneously being framed by a deep, gently-curving rim. This enables the ultimate showcasing of some of the most innovative and influential dishes belonging to this cuisine.



Nordic Tray **NEW**  
11070640 34.0cm (13½")



Nordic Tray **NEW**  
11070641 29.0cm (11½")



Nordic Tray **NEW**  
11070642 24.0cm (9½")



Nordic Coupe Plate **NEW**  
11070639 28.0cm (11")



Nordic Coupe Plate  
11070634 25.25cm (10")



Nordic Coupe Plate  
11070631 20.25cm (8")



Nordic Coupe Plate  
11070630 16.5cm (6½")



Rim Plate  
**MP300** 30.0cm (11¾")  
**MP301** 27.0cm (10⅝")  
**MP302** 25.5cm (10")  
**MP303** 23.0cm (9")  
**MP304** 20.25cm (8")



Coupe Plate  
**MP310** 30.0cm (11¾")  
**MP311** 28.0cm (11")  
**MP312** 25.5cm (10")  
**MP313** 23.0cm (9")  
**MP314** 20.25cm (8")  
**MP315** 15.25cm (6")



Oval Coupe Plate  
**MP320** 34.25cm (13½")



Rim Bowl Pasta  
**MP321** 28.5cm (11") 34.0cl (12oz) Well only



Rim Soup Plate  
**MP323** 24.0cm (9½") 31.0cl (11oz) Well only



Bowl Coupe  
**MP322** 25.5cm (10") 120.25cl (42⅔oz)



Bowl Oatmeal  
**MP324** 16.5cm (6½") 51.5cl (18⅞oz)



Soup Cup Stacking U/H  
**MP337** 28.5cl (10oz) Fits MP325



Sugar Bouillon  
**MP338** 22.75cl (8oz) Fits MP325



Mug  
**MP335** 34.0cl (12oz) Fits MP325  
**MP336** 8.5cl (10oz) Fits MP325



Cup Stacking  
**MP330** 21.25cl (7½oz) Fits MP325  
**MP331** 8.5cl (3oz) Fits MP326



Can Cup  
**MP332** 34.0cl (12oz) Fits MP325  
**MP333** 22.75cl (8oz) Fits MP325  
**MP334** 8.5cl (3oz) Fits MP326



Saucer  
**MP325** 15.25cm (6")  
 Saucer D/W S/S  
**MP326** 11.75cm (4⅝")



Jug  
**MP339** 14.25cl (5oz)



Beverage Pot  
**MP340** 60.0cl (21oz)  
**MP341** Lid of Beverage Pot



\*5 year edge chip warranty on products excluding: MP339, MP340, MP341.

The Concorde range is imbued with the sophisticated aesthetics of classic Mid-Century styling. Clean lines and a fresh, understated tactile surface are balanced with a warm, approachable, off-white body colour to provide a casual yet crisp food presentation style.

All items are carefully designed to be discretely functional in a busy kitchen as well as providing excellent durability. Stackability is a key feature, enabling efficient storage of items, as is compatibility which allows different items to be stacked together and use a common saucer.

Using both coupe and rimmed profiles, the Concorde range provides a modern, yet functional aesthetic to showcase the very best cuisine.





The Terrace range brings together the look and feel of Stoneware with the timeless appeal of a simple, tactile embossment. The range utilises semi-matt glazes which pool and interact with the embossed surface to give the impression of hand-worked, semi-precious stone.

The embossment is carefully arranged to draw the eye to the centre of each piece, where the focus is on the food, framing it perfectly. In addition to a useful range of standard coupe plate sizes, Terrace comprises a full suite of bowl sizes and shapes and a comforting beverage collection.

Patterns Available



Coupe Plate  
FA020 27.0cm (10<sup>5</sup>/<sub>8</sub>"")  
FA041 23.5cm (9<sup>1</sup>/<sub>4</sub>"")  
FA021 20.0cm (8")  
FA022 16.5cm (6<sup>1</sup>/<sub>2</sub>"")



Coupe Platter  
FA023 34.0cm (13<sup>3</sup>/<sub>4</sub>"")  
FA024 29.0cm (11<sup>1</sup>/<sub>4</sub>"")  
FA025 24.0cm (9<sup>1</sup>/<sub>2</sub>"")  
FA026 19.0cm (7<sup>1</sup>/<sub>2</sub>"")



Coupe Bowl  
FA027 25.5cm (10")  
FA028 21.5cm (8<sup>1</sup>/<sub>2</sub>"")



Deep Coupe Bowl  
FA029 16.5cm (6<sup>1</sup>/<sub>2</sub>"")



Ramen Bowl  
FA037 20.0cm (8") 166.0cl (59oz)  
FA038 17.8cm (6<sup>7</sup>/<sub>8</sub>"") 109.0cl (38.5oz)  
FA039 15.0cm (6") 67.5cl (23.8oz)  
FA040 12.8cm (5") 40.5cl (14.3oz)  
Fits FA034



Chip Pot  
FA035 28.5cl (10oz) Fits FA032



Dipper  
FA036 7.4cl (2<sup>1</sup>/<sub>2</sub>oz) Fits FA034



Mug  
FA030 34.0cl (12oz) Fits FA032



Cup  
FA031 22.75 (8oz) Fits FA032  
FA033 8.5cl (3oz) Fits FA034



Saucer  
FA032 16.2cm (6<sup>3</sup>/<sub>8</sub>"")  
FA034 12.5cm (4<sup>7</sup>/<sub>8</sub>"")



Forager by Robert Gordon is designed with a carefully applied reactive glaze that free-flows over each shape to create a unique finish that is different on every piece. Featuring an unglazed bottom, this collection highlights the richness of raw materials through exposed stoneware and offers a handmade & organic appeal.



Plate  
**RG145** 29.5cm (11¾")



Plate  
**RG146** 23.8cm x 19.5cm (9½" x 7½")



Plate  
**RG147** 19.3cm x 15.5cm (7½" x 6")



Plate  
**RG150** 13.0cm x 1.3cm H (5" x ½" H)



Tray  
**RG151** 34.3 x 17.3 x 6.4cm H  
(13" x 6½" x 2½" H)



Tray  
**RG152** 23.0 x 12.4 x 4.8cm H  
(9" x 4½" x 1⅞" H)



Bowl  
**RG149** 28.6cm x 4.5cm H  
(11" x 1¾" H)



Bowl  
**RG148** 22.8cm x 4.1cm H  
(9" x 1⅝" H)



Stackable Bowl  
**RG155** 21.0cm x 3.5cm H  
(8¼" x 1⅜" H) 76.2cl (25¾oz)



Stackable Bowl  
**RG156** 15.2cm x 3.5cm H  
(6" x 1⅜" H) 38.4cl (13oz)



Stackable Bowl  
**RG157** 10.2cm x 3.5cm H  
(4" x 1⅜" H) 17.0cl (5¼oz)



Bowl  
**RG153** 8.3cm x 3.5cm H  
(3⅜" x 1⅜" H) 8.1cl (2¾oz)



Bowl  
**RG154** 5.7cm x 2.5cm H  
(2¼" x 1" H) 3.0cl (1oz)



Bowl **NEW**  
**RG166** 14.9cm x 14.6cm x 5.4cm  
(5⅞" x 5¾" x 2⅞" H) 40.0cl (14oz)



Condiment Bowl **NEW**  
**RG164** 12.0cm x 5.0cm (4¾" x 2")  
35.5cl (12½oz)



Condiment Bowl **NEW**  
**RG165** 8.6cm x 5.0cm (3⅜" x 2")  
16.0cl (5½oz)



Cup  
**RG158** 12.1 x 8.6 x 6.4cm H  
(4¾" x 3⅜" x 2½" H) 23.7cl (8oz)



Mug  
**RG160** 12.1 x 8.6 x 8.9cm H  
(4¾" x 3⅜" x 3½" H) 35.5cl (12oz)



Saucer  
**RG159** 14.0cm (5½")  
Fits RG158 & RG160



Espresso Cup **NEW**  
**RG161** 10.0cl (3½oz)



Espresso Saucer **NEW**  
**RG162** 12.7cm (5")



Cup Unhandled **NEW**  
**RG163** 8.6cm x 8.9cm (3⅜" x 3½")  
35.0cl (12oz)



Creamer **NEW**  
**RG167** 7.9cm x 6.4cm x 7.0cm  
(3⅜" x 2½" x 2¾") 14.0cl (5oz)



MKS knives, created by designer Adam Simha, are the knives you will always reach for, feel compelled to care for, and never want to put down. Adam's original knife designs are based on over 20 years of knife making, his own professional kitchen experience, and the custom knives he has built for working chefs. He provides service for these knives exclusively, giving him first hand feedback on every detail from material to blade shape to edge geometry, to hardness, to hardware.

"1998 I formed MKS Design to pursue the practice of furniture and homewares design and fabrication. The knives I began making and enjoyed the most turned out to be knives for cooking, which brought me full circle back to the sphere of culinary arts." - Adam Simha.



Burlington  
**5797WP052**  
Black ABS Plastic and Polywood/Copper  
Rivet Knife 10¼"



Kendall  
**5797WP053**  
Brass and Polywood/Copper  
Rivet Knife 9½"



Lowell  
**5797WP054**  
Grey/White/Black and Polywood/Copper  
Rivet Knife 8"



**octa**

A premium rechargeable table lamp with a magnetic charging base. This cordless table lamp provides direct downward and glare-free light. With more than 9 hours of battery life, IP65 protection (dust and water tight), it's ideal for indoor and outdoor use. The head, rod and base are made of corrosion resistant UV protected commercial grade aluminium alloy. Octa is also made with protection polyester powder coating and has no visible screws.



Octa Dark Grey LED  
Rechargeable Table Light  
Contains Lithium Battery  
11.0cm x 28.0cm H  
**LMPOCT300GRY**  
**LMPOCT300GRY6** 6 Pack



Octa White LED  
Rechargeable Table Light  
Contains Lithium Battery  
11.0cm x 28.0cm H  
**LMPOCT300WHT**  
**LMPOCT300WHT6** 6 Pack



**pirlo**

A premium rechargeable table lamp with a magnetic contact charging system. Designed with simple, intuitive controls, easily switch on and off, adjust colour, temperature and brightness. Housed in a simple, elegant, and beautiful aluminium casting. Pirlo comes with an optical design diffuser that combines numerous light reflections and refraction, producing light that is even and comfortable. Specifically designed for a commercial dinner table, it has more than 9 hours of battery life.

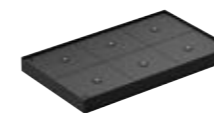


Pirlo Dark Grey LED  
Rechargeable Table Light  
Contains Lithium Battery  
13.0cm x 27.0cm H  
**LMPPIR300GRY**  
**LMPPIR300GRY6** 6 Pack



Pirlo White LED  
Rechargeable Table Light  
Contains Lithium Battery  
13.0cm x 27.0cm H  
**LMPPIR300WHT**  
**LMPPIR300WHT6** 6 Pack

*accessories*



Lampa Magnetic Charging  
Tray UK PLUG  
(Holds 6)  
**LMPTOWRUKPLUG**

Lampa Magnetic Charging  
Tray EU PLUG  
(Holds 6)  
**LMPTOWREUPLUG**



Lampa Trolley  
**LTR0LY**



The Fusion Buffet System is a versatile mix of products including risers, shelves, baskets and juicers that can be outfitted with an assortment of inserts like induction ranges or grills. This system features unique, recycled teak lumber in Ash Grey, Grey Wash and Natural finishes. The look and feel of the Fusion Bakery Boxes brings upscale, rustic chic to your buffet, while its functionality offers an opportunity to bring your presentation to new heights. This system is complimented perfectly by the Square & Rectangle Metal Risers.



Bakery Box w/ Acrylic Drawer  
Ash Grey Teak  
36.2 x 21.6cm (L 14¼" x W 8½" H 8")  
**DWFBWDBDAG**



Bakery Box w/ Acrylic Drawer  
Grey Wash Teak  
36.2 x 21.6cm (L 14¼" x W 8½" H 8")  
**DWFBWDBDGW**



Bakery Box w/ Acrylic Drawer  
Natural Teak  
36.2 x 21.6cm (L 14¼" x W 8½" H 8")  
**DWFBWDBDT**

**NEW** CREATIONS *cereal dispensers*

*beautiful display, mess-free service*

Ideal for hotels, restaurants, and cafeterias, the Creations Cereal Dispensers feature an elongated tube to beautifully display and serve your favourite cereals. The rubber turn-style mechanism warrants a mess-free service, ensuring that the food won't crumble and helps control food cost. Find the perfect match for the cereal dispensers in the D.W. Haber Insulated Milk Dispensers.



Single Cereal Dispenser  
**7345MW116**  
31.8 x 24.8 x 78.7cm H  
(12½" x 9¾" x 31" H)  
11L (11.6qt)

**NEW** CREATIONS *hydraulic chafers*

*chafing dishes at a phenomenal price point*

We are pleased to bring hydraulic closing chafing dishes to the Creations collection. Each chafer has a conveniently large glass view in the lid to increase visibility of the food. This features allows for fewer opens, thus keeping the heat in and the food remains at proper serving temperature. Additionally, the easy-to-remove hydraulic lid closes on its own to ensure that food is kept safe and covered during service. Great for any buffet display, these chafers are induction capable and perfectly priced for even the most value-conscious operators.



Round Chafing Dish And Stand  
**7351MW107** ●  
47.6 x 42.5 x 30.4cm H (18¾" x 16¾" x 12" H)  
9.1L (2gal)  
Round Chafing Dish  
**7351MW102**  
47.6 x 42.5 x 19.0cm H (18¾" x 16¾" x 7½" H)  
9.1L (2gal)  
Round Chafing Dish Stand  
**7351MW103**  
30.4 x 39.3 x 16.5cm H (12" x 15½" x 6½" H)



Rectangular Chafing Dish w/Stand  
**7351MW100**  
57.2 x 43.2 x 29.8cm H (22½" x 17" x 11¾" H)  
7.6L (8qts)



Square Chafing Dish and Stand  
**7351MW106** ●  
32.4cm x 31.1cm (12¾" x 12¼") 5.7L (6qts)  
Square Chafing Dish  
**7351MW104 NEW**  
38.7 x 43.2 x 17.1cm H (15¼" x 17" x 6¾" H)  
5.7L (6qts)  
Square Chafing Dish Stand  
**7351MW105 NEW**  
32.4 x 31.1 x 16.5cm H (12¾" x 12¼" x 6½" H)  
Square Chafing Dish Food Pan  
**7351MW108** ●  
32.4 x 35.6 x 6.4 (12¾" x 14" x 2½" H)  
5.7L (6qts)

Chafing dishes include a stainless steel food pan and attachable spoon holder. Stands include a fuel holder.

● Non-Stock



Mogogo's new version of the archetype iconic market cart: Cantine Display Cart. Those carts have existed for centuries for goods transportation and for merchandise displaying at markets around the world. Mogogo revives this concept, by updating the design and materials while respecting the past.



Cantine Cart with Shelves  
Dark with Black Wheels  
**MGCCNT01DSXX** L204.5cm W76.0cm H188.0cm  
(L80½" W30" H71")

- Components  
**MGSCNTSM0401** Body and Frame - Dark Qty: 1  
**MGSCNTMT0201** Shelf Frame Qty: 1  
**MGSCNTDB0501** Shelf - Dark Qty: 2  
**MGSCNTSM0201** Wheels - Black Qty: 1



Cantine Cart with Shelves & Crates  
Dark with Black Wheels  
**MGCCNT02DSXX** L204.5cm W76.0cm H188.0cm  
(L80½" W30" H71")

- Components  
**MGSCNTSM0401** Body and Frame - Dark Qty: 1  
**MGSCNTMT0201** Shelf Frame Qty: 1  
**MGSCNTDB0501** Shelf - Dark Qty: 2  
**MGSCNTDB0401** Crate Support Shelf - Dark Qty: 1  
**MGSCNTSM0201** Wheels - Black Qty: 1  
**MGSCNTDB0601** Crate Dark Bamboo Qty: 6



Cantine Cart with Shelf & Crates & Sign  
Dark with Black Wheels  
**MGCCNT05DSXX** L204.5cm W76.0cm H188.0cm  
(L80½" W30" H71")

- Components  
**MGSCNTSM0401** Body and Frame - Dark Qty: 1  
**MGSCNTMT0201** Shelf Frame Qty: 1  
**MGSCNTDB0501** Shelf - Dark Qty: 1  
**MGSCNTDB0401** Crate Support Shelf - Dark Qty: 1  
**MGSCNTDB0601** Crate Dark Bamboo Qty: 6  
**MGSCNTSM0501** Sign Qty: 1  
**MGSCNTSM0201** Wheels - Black Qty: 1



Cantine Cart (Cart Only)  
Dark with Black Wheels  
**MGCCNT04DSXX** L204.5cm W76.0cm H92.0cm  
(L80½" W30" H36")

- Components  
**MGSCNTSM0401** Body and Frame Dark Qty: 1  
**MGSCNTSM0201** Wheels - Black Qty: 1





Following the success of the Creations Craft White Melamine range, Steelite is proud to introduce Craft Arctic, a perfect choice for any casual or buffet setting. Alongside a curated selection of plates sits a suite of bowls that look stunning on any counter serve or buffet display. Can be used for either hot or cold food types, and with a neutral colour palette, looks at home in any environment.

*simply beautiful melamine*

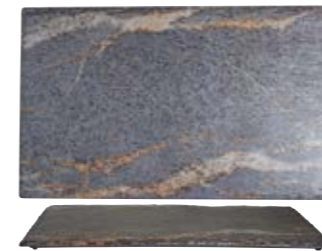
The classic Performance Blue Dapple is now available in melamine! With a white body and faded royal blue rim, this simply beautiful collection is available in coupe plates and bowls as well as a rectangle tray. Extend your dining room service to outdoor patios and rooftops with the benefits of break resistant melamine, or mix and match with existing patterns to create a unique tabletop presentation.



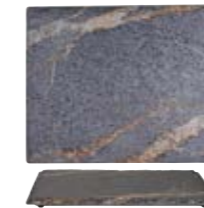


*long-lasting & robust*

Reminiscent of a deep blue sky and rocky mountain hillside is the Quarry collection by Creations Melamine. These hearty platters and bowls feature a unique, stone-like decal on a highly durable melamine body and are ideally sized to meet the needs of any buffet presentation.



GN 1/1 Rectangle Tray **NEW**  
7192TM307 53.0cm x 32.5cm



GN 1/2 Rectangle Tray **NEW**  
7192TM309 32.5cm x 26.5cm



GN 1/3 Rectangle Tray **NEW**  
7192TM308 32.5cm x 17.6cm



GN 2/4 Rectangle Tray **NEW**  
7192TM310 53.0cm x 16.2cm



Bowl  
7192TM302A  
37.5 x 32.1 x 9.2cm  
(14<sup>3</sup>/<sub>4</sub>" x 12<sup>5</sup>/<sub>8</sub>" x 3<sup>5</sup>/<sub>8</sub>" ) 520.5cl (5<sup>1</sup>/<sub>2</sub> qts)



Bowl  
7192TM301A  
43.2 x 24.1 x 7.6cm  
(17" x 9<sup>1</sup>/<sub>2</sub>" x 3") 260.2cl (2<sup>3</sup>/<sub>4</sub> qts)



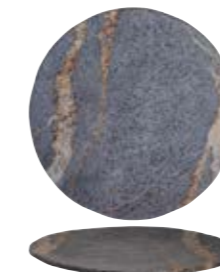
Square Bowl  
7192TM300A  
26.03 x 24.8 x 7.6cm  
(10<sup>1</sup>/<sub>4</sub>" x 9<sup>3</sup>/<sub>4</sub>" x 3") 189cl (2 qts)



V Shape Bowl  
7192TM303A  
25.1 x 25.1 x 15.6cm  
(9<sup>7</sup>/<sub>8</sub>" x 9<sup>7</sup>/<sub>8</sub>" x 6<sup>1</sup>/<sub>8</sub>" ) 402.2cl (4<sup>1</sup>/<sub>4</sub> qts)



Platter  
7192TM304A  
45.7 x 22.9 x 3.8cm (18" x 9" x 1<sup>1</sup>/<sub>2</sub>")



Round Platter **NEW**  
7192TM305 34.9cm (13<sup>3</sup>/<sub>4</sub>")



Inspired by the fine intricacies and beauty of Sea Urchin Shells, Quill brings a new organic look to William Edwards' Signature Collection. Designed on a suite of carefully curated fine bone china profiles, Quill effortlessly frames dishes for high-end service.



Plate  
**AND0478** 31.0cm (12¼")



Plate  
**AND0480** 27.5cm (10¾")



Plate  
**AND0471** 22.0cm (8¾")



Plate  
**AND0472** 15.0cm (6")



Deep Coupe Bowl  
**AND0550** 28.5cm (11¼")



Bowl  
**AND0441**  
24.0cm (9½") 59.7cl (21oz)



Bowl  
**AND0332**  
14.5cm x 5.2cm h (5¾" x 2" h)  
35.0cl (12½oz)



Mug  
**AND0281**  
9.0cm h (3½" h) 35.0cl (12½oz)



Tea Cup  
**AND0436** 5.4cm h (2⅛" h)  
17.0cl (6oz) Fits AND0109  
Tea Saucer Low  
**AND0109** 15.0cm (6")



Teapot  
**AND0467**  
15.3cm h (6" h) 65.0cl (23oz)  
Fits Teapot Infuser 82000AND1001



Milk Jug  
**AND0470**  
5.0cm h (2" h) 22.0cl (7¾oz)



Covered Sugar  
**AND0468**  
5.0cm h (2" h) 18.0cl (6½oz)





Plate Copper & Grey  
**AND0101V1** 30.0cm (11¾")  
Fits Cloche L/S AND0177



Plate White  
**AND0101V2** 30.0cm (11¾")  
Fits Cloche L/S AND0177



Plate  
**AND0102** 27.5cm (10¾")



Plate  
**AND0103** 22.0cm (8¾")  
Fits Large 3-Tier Tea Stand



Plate  
**AND0104** 16.8cm (6½")  
Fits Small 3-Tier Tea Stand &  
2-Tier Plate Stand



Rectangle Tray L/S  
**AND0136**  
34.0cm x 15.0cm (13½" x 6")



Large Rim Bowl  
**AND0132**  
28.0cm x 5.7cm h  
(11" x 2¼" h) 60.0cl (21oz)  
Fits Cloche L/S AND0177



Rim Bowl  
**AND0105**  
22.0cm (8¾") 22.5cl (8oz)



Bowl  
**AND0332**  
14.5cm x 5.2cm h (5¾" x 2" h)  
35.0cl (12½oz)



Condiment Pot  
**AND0249**  
6.5cm x 3.3cm h (2½" x 1½" h)  
5.0cl (1¾oz)



Mug  
**AND0281**  
9.0cm h (3½" h)  
35.0cl (12½oz)



Tea Cup Can  
**AND0110**  
6.0cm h (2½" h) 20.0cl (7oz)  
Fits Saucer AND0211



Saucer  
**AND0211** 16.0cm (6¼")



Coffee Can  
**AND0112**  
6.0cm h (2½" h) 10.0cl (3½oz)  
Fits Saucer AND0152



Espresso Saucer  
**AND0152** 12.0cm (4¾")



Oval Teapot 2 Cup  
**AND0337**  
10.0cm h (4" h) 55.0cl (19½oz)



Connoisseur Beverage Pot  
**AND0542**  
45.0cl (15¼oz)  
Includes Teapot Infuser  
82000AND1001



Milk Jug S/S  
**AND0340**  
9.0cm h (3½" h) 22.0cl (7¾oz)



Oval Sugar  
**AND0335**  
9.0cm h (3½" h) 22.5cl (8oz)  
**AND0341** Oval Sugar Lid

A luxurious blend of geometric design and embossment, Quanta presents a stunning understated elegance through white-on-white printing techniques, complimented with the opulence of copper mica elements. Together, this creates layers of elevated texture to showcase the finest menu creations.



*view the full  
william edwards collection*





The Coupe Collection showcases a smart shape providing a refined, clean aesthetic suitable for a large variety of F&B outlets. The holloware shapes allow for a full decoration pattern coverage as well as excellent functionality in service.



Coupe Plate  
**AND0419** 30.0cm (11¾")  
**AND0244** 27.0cm (10½")  
**AND0547** 23.0cm (9") **NEW**



**AND0163** 21.0cm (8¼")\*  
**AND0421** 16.5cm (6½")\*\*



Butter Dish  
**AND0295** 11.0cm (4½")  
Fits Cloche S/S AND0543  
**AND0238** 8.0cm (3")



Square Tray **NEW**  
**AND0487**  
22.5cm x 22.5cm (8¾" x 8¾")



Oblong Tray **NEW**  
**AND0607**  
25.3cm x 9.3cm (10" x 3¾")



Deep Coupe Bowl **NEW**  
**AND0550** 28.5cm (11¼")



Bowl  
**AND0441**  
24.0cm (9½") 59.7cl (21oz)



Large Bowl **NEW**  
**AND0150**  
23.0cm (9¼") 2ltr (70oz)



Bowl  
**AND0332**  
14.5cm x 5.2cm h (5¾" x 2" h)  
35.0cl (12¼oz)



Bowl  
**AND0126**  
11.0cm x 5.0cm h (4¼" x 2" h)  
25.0cl (9oz)  
Bowl Lid  
**AND0127** 12.0cm (4¾")



Mug  
**AND0281**  
9.0cm h (3½" h)  
35.0cl (12¼oz)



Mug Small  
**AND0362**  
8.6cm h (3½" h)  
30.0cl (10½oz)



Arabic Cup  
**AND0237**  
5.0cm h 10.0cl



Tea Cup Low **NEW**  
**AND0557**  
34.0cl (12oz) Fits AND0107



Tea Cup Low  
**AND0108**  
6.5cm h (2½" h) 22.0cl (8oz)  
Tea Saucer Low  
**AND0109** 15.0cm (6")



Espresso Cup Low **NEW**  
**AND0558**  
8.5cl (3oz) Fits AND0146



Tea Cup Can  
**AND0110**  
6.0cm h (2½" h) 20.0cl (7oz)  
Saucer  
**AND0211** 16.0cm (6¼")



Coffee Can  
**AND0112**  
6.0cm h (2½" h) 10.0cl (3½oz)  
Espresso Cover **NEW**  
**AND0650** Fits AND0112  
Espresso Saucer  
**AND0152** 12.0cm (4¾")



Tea For One Cup  
**AND0411A**  
6.0cm h (2½" h) 26.0cl (9oz)  
Tea For One Saucer  
**AND0169** 14.5cm (5¾")



Tea For One Teapot  
**AND0411B**  
12.4cm h (5" h) 46.0cl (16oz)



Tea For One Set  
**AND0411**  
Teapot, Teacup & Saucer



Oval Teapot 4 Cup  
**AND0333**  
13.5cm h (5¼" h)  
70.0cl (24½oz)  
Oval Teapot 2 Cup  
**AND0337**  
10.0cm h (4" h) 55.0cl (19¼oz)



Oval Coffee Pot  
**AND0477**  
17.0cm h (6¾" h)  
100.0cl (35oz)



Milk Jug L/S  
**AND0334** 10.0cm h (4" h)  
35.0cl (12¼oz)  
Milk Jug S/S  
**AND0340** 9.0cm h (3½" h)  
22.0cl (7¾oz)



Cream/Jus Jug  
**AND0159**  
6.5cm h (2½" h)  
10.0cl (3½oz)



Oval Sugar  
**AND0335**  
9.0cm h (3½" h) 22.5cl (8oz)  
**AND0341** Oval Sugar Lid

\* Fits Large 3-Tier Tea Stand  
\*\* Fits Small 3-Tier Tea Stand & 2-Tier Plate Stand



**United Kingdom &  
Republic of Ireland**

Steelite International Ltd  
Orme Street  
Stoke-on-Trent  
ST6 3RB, England  
Telephone +44 (0)1782 821 000  
Email [headoffice@steelite.com](mailto:headoffice@steelite.com)

**United States of America**

Steelite International America  
154 Keystone Drive  
New Castle, PA 16105  
Telephone +1724 856 4900  
Email [usa@steelite.com](mailto:usa@steelite.com)

**Benelux**

Steelite International Benelux BV  
's Gravelandseweg 258  
3125 BK Schiedam  
Nederland  
Telephone +31 (0)20 617 5915  
Email [info@steelite.nl](mailto:info@steelite.nl)

**Germany**

Steelite International  
Deutschland GmbH  
Philipp-Reis-Straße 16  
64404 Bickenbach  
Telephone +49 (0)6257 61950  
Email [germany@steelite.com](mailto:germany@steelite.com)

**France**

Telephone +33 682 574 291  
Email [france@steelite.com](mailto:france@steelite.com)

**Italy**

Telephone +39 0522 902051  
Email [italy@steelite.com](mailto:italy@steelite.com)

**Portugal**

Rua Brito Pais, 4C - Loja - Miraflores  
1495-028 Algés  
Telephone +351 215 839 333  
Mobile +351 918 550 429  
Email [jq@hotelrestaurantco.com](mailto:jq@hotelrestaurantco.com)

**Scandinavia**

Telephone +46 730 322 818  
Email [scandinavia@steelite.com](mailto:scandinavia@steelite.com)

**Spain**

Steelite International Spain  
Médico Andrés Boldó, 2  
03005 Alicante  
Telephone +34 966 590 300  
Email [spain@steelite.com](mailto:spain@steelite.com)

**Russia, Central & Eastern Europe**

CECUK Ltd  
Coleridge House, Suite 47  
2-3 Coleridge Gardens  
London  
NW6 3QH  
Telephone 0044 207 435 9033  
Mobile 00777 613 5088  
Email [rcee@steelite.com](mailto:rcee@steelite.com)

**Australia**

Steelite International  
Unit 45, Slough Business Park  
2 Slough Avenue  
Silverwater  
NSW 2128  
Telephone +61 (0)2 9648 4522  
Email [australia@steelite.com](mailto:australia@steelite.com)

**Canada**

Steelite International Canada Ltd  
Unit 2, 26 Riviera Drive  
Markham, Ontario  
L3R5M1  
Telephone +1 905 752 1074  
Email [canada@steelite.com](mailto:canada@steelite.com)

**Middle East**

Telephone +44 7795 173 066  
Email [adennis@steelite.com](mailto:adennis@steelite.com)

**Asia**

Telephone +82 10 4997 7926  
Email [asia@steelite.com](mailto:asia@steelite.com)

*Visit our global showrooms*

---

**London Showroom**

Steelite International Ltd  
75 Wells Street  
2nd Floor South  
London, W1T 3QH  
Telephone +44 (0)1782 249 599  
Email [london@steelite.com](mailto:london@steelite.com)

**Madrid Showroom**

Calle Serrano, 27, 6th Floor,  
28001 Madrid  
Telephone +34 910 400 870  
Email [madrid@steelite.com](mailto:madrid@steelite.com)

**Hong Kong Showroom**

20/F. Chinachem Hollywood Center  
1-13 Hollywood Road  
Central, Hong Kong  
Telephone +852 3906 8989  
Email [umesh@globalhotelware.com](mailto:umesh@globalhotelware.com)

**US**

Atlanta, Georgia  
Chicago, Illinois  
Los Angeles, California  
Miami, Florida  
New York, New York  
Washington, D.C.  
Youngstown, Ohio

**EU**

Bickenbach, Germany

**AUS**

Sydney, NSW

**CA**

Toronto, Ontario

**www.steelite.com**

**f** [steeliteinternationalEMEA](#)  
**X** [steeliteEMEA](#)  
**@** [steelite\\_emea](#)